

SWALE LANDSCAPE SPECIES

Tree Species			Planting Density	
Scientific Name	Common Name	Mature Size	45L	Tube Stock
Acacia anuera	Mulga	10m	1 tree grouping (3-4 trees) for every 10m of lot frontage	2 tree groupings (3- 4 trees) for every 10m of lot frontage
Acacia coriacea	Desert Oak / Dogwood	7m		
Brachichyton acuminatus	Rock Kurrajong	8m		
Corymbia deserticola	Desert Bloodwood	7m		
Eucalyptus camaldulensis	River Gum	15m		
Eucalyptus dichromophloia	Variable Barked Bloodwood	10m		
Eucalyptus leucophloia	Snappy Gum	8m		
Eucalyptus vitrix	Coolibah	15m		
Lysiphylum cunninghamii	Native Bauhinia	7m		
Melaleuca leucadendron	Cadjeput	10m		
Pittosporum phylliraeoides	Weeping Pittosporum	8m		

Shrub Species			Planting Density	
Scientific Name	Common Name	Mature Size (height x spread)	130mm Pot	Tube Stock
Acacia ancistrocarpa	Fitzroy Wattle	1.5m x 1.5m	3/sqm	5/sqm
Acacia arida	Arid Wattle	1.5m x 1.5m	3/sqm	5/sqm
Acacia bivenosa	Dune Wattle	2m x 2m	2/sqm	4/sqm
Acacia sclerosperma	Limestone Wattle	1.5m x 1.5m	3/sqm	5/sqm
Acacia xiphophylla	Snakewood	3-7m (h)	1/sqm	2/sqm
Capparis spinosa	Caper Bush	1.5-7m (h)	2/sqm	2/sqm
Eremophila glabra	Emu Bush	1m x 1m	3/sqm	5/sqm
Eremophila macdonnellii		1m x 1m	3/sqm	5/sqm
Eremophila maculata	Spotted Emu Bush	0.5-2m(h)	3/sqm	5/sqm
Eremophila pterocarpa	Silver Poverty Bush	1m x 1m	3/sqm	5/sqm
Grevillea wickhamii	Wickham's Grevillea	1-5m (h)	2/sqm	3/sqm
Senna artemisioides	Silver Cassia	1.5m x 1.5m	2/sqm	4/sqm
Senna artemisioides ssp. helmsii	Crinkled Cassia	1.5m x 1.5m	2/sqm	4/sqm
Senna artemisioides ssp.	Bloodbush	1.5m x 1.5m	2/sqm	4/sqm
Senna artemisioides ssp. sturtii	Grey Cassia	1.5m x 1.5m	2/sqm	4/sqm

GENERAL LANDSCAPE SPECIES

Tree Species			Planting Density	
Scientific Name	Common Name	Mature Size	45L	Tube Stock
Acacia anuera	Mulga	10m	1 tree for every 10m landscape area	2 trees for every 10m landscape area
Acacia coriacea	Desert Oak / Dogwood	7m		
Brachichyton acuminatus	Rock Kurrajong	8m		
Corymbia deserticola	Desert Bloodwood	7m		
Eucalyptus dichromophloia	Variable Barked Bloodwood	10m		
Eucalyptus leucophloia	Snappy Gum	8m		
Lysiphylum cunninghamii	Native Bauhinia	7m		
Melaleuca leucadendron	Cadjeput	10m		
Pittosporum phylliraeoides	Weeping Pittosporum	8m		

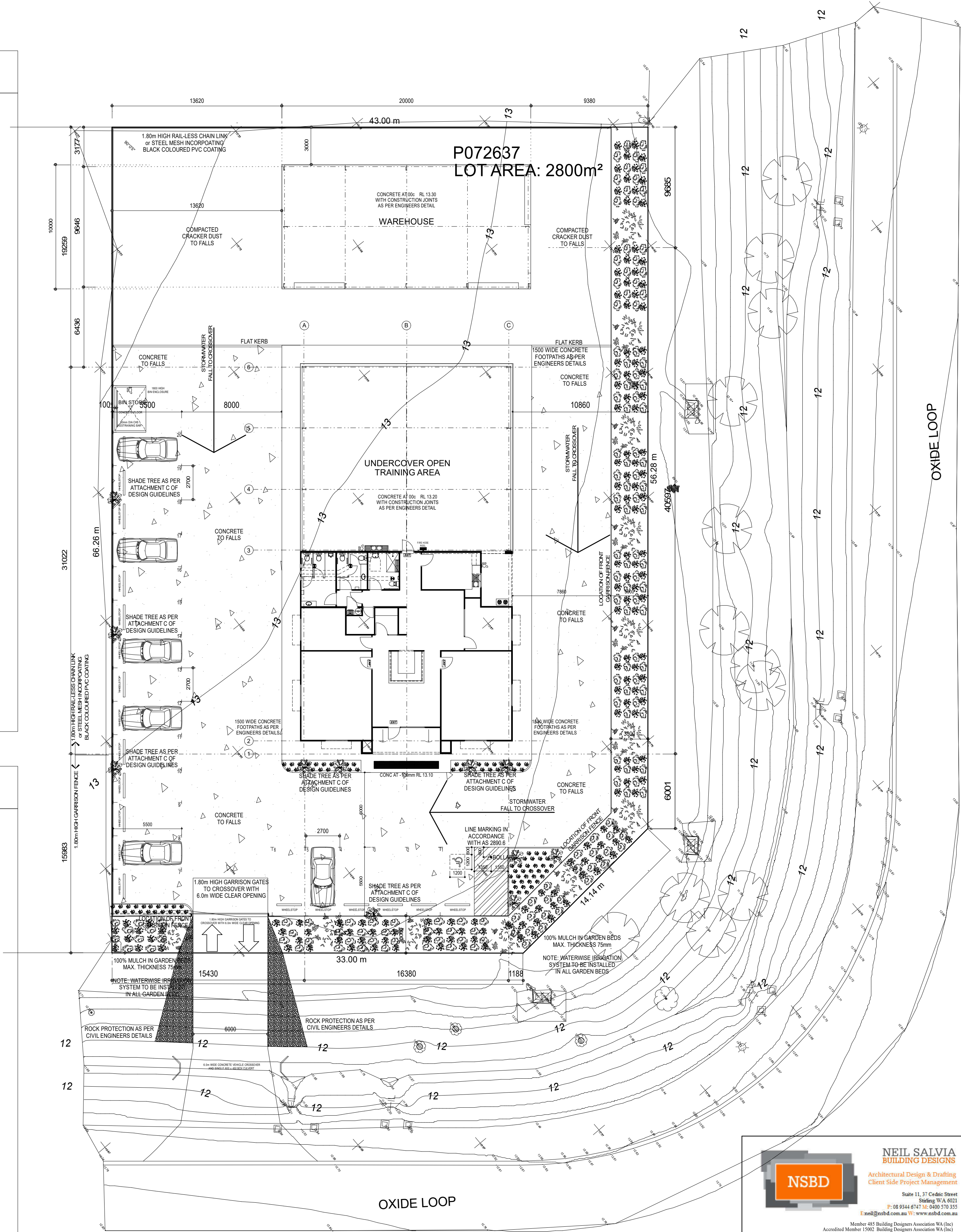
Shrub Species			Planting Density	
Scientific Name	Common Name	Mature Size (height x spread)	130mm Pot	Tube Stock
Acacia sclerosperma	Limestone Wattle	1.5m x 1.5m	3/sqm	5/sqm
Acacia xiphophylla	Snakewood	3-7m (h)	1/sqm	2/sqm
Eremophila glabra	Emu Bush	1m x 1m	3/sqm	5/sqm
Eremophila macdonnellii		1m x 1m	3/sqm	5/sqm
Eremophila maculata	Spotted Emu Bush	0.5-2m(h)	3/sqm	5/sqm
Eremophila pterocarpa	Silver Poverty Bush	1m x 1m	3/sqm	5/sqm
Grevillea wickhamii	Wickham's Grevillea	1-5m (h)	2/sqm	3/sqm
Senna artemisioides	Silver Cassia	1.5m x 1.5m	2/sqm	4/sqm
Senna artemisioides ssp. helmsii	Crinkled Cassia	1.5m x 1.5m	2/sqm	4/sqm
Senna artemisioides ssp.	Bloodbush	1.5m x 1.5m	2/sqm	4/sqm
Senna artemisioides ssp. sturtii	Grey Cassia	1.5m x 1.5m	2/sqm	4/sqm

Grouncover Species			Planting Density	
Scientific Name	Common Name	Mature Size(height x spread)	130mm Pot	Tube Stock
Acacia gregorii	Gregory's Wattle	0.5m x 2m	3/sqm	4/sqm
Enchylaena tomentosa	Barrier Salt Bush	0.1-0.6 x 2m	3/sqm	4/sqm
Gomphrena canescens	Bachelor's Buttons	0.1-0.9m x 0.8m	4/sqm	5/sqm
Ipomoea muelleri	Native Morning Glory	0.2m x 2m	3/sqm	4/sqm
Maireana georgei	Saliny Bluebush	0.5m x 1.3m	3/sqm	4/sqm
Pimelea ammodharis		0.2-1.5m x1.5m	3/sqm	4/sqm
Ptilotus calostachyus	Weeping Mulla Mulla	0.2-2m x 0.5m	5/sqm	6/sqm
Ptilotus rotundifolius	Royal Mulla Mulla	0.5m x 1m	3/sqm	4/sqm
Scaevola parvifolia	Camel Weed	0.3m x 0.5m	5/sqm	6/sqm
Swainsona formosa	Sturt's Desert Pea	0.3m x 1m	3/sqm	4/sqm
Tribulus hirsutus		0.15 (h)	6/sqm	8/sqm

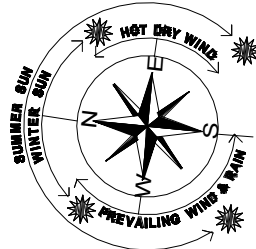
Tussock Species			Planting Density	
Scientific Name	Common Name	Mature Size (height x spread)	130mm Pot	Tube Stock
Chrysopogon fallax	Golden Beard Grass	0.3-1.5m(h)	4/sqm	6/sqm
Cymbopogon ambiguus	Native Lemon Grass	0.5m x0.5m	4/sqm	6/sqm
Eriachne aristidea		0.15-0.5m x 0.8m	3/sqm	5/sqm
Eriachne benthamii	Swamp Wanderrie	0.4m x 0.9m	3/sqm	4/sqm
Eriachne mucronata	Mountain Wanderrie Grass	0.1-0.8m(h)	3/sqm	4/sqm
Eriachne oblusa	Northern Wanderie Grass	0.2-0.6m(h)	4/sqm	5/sqm
Eriachne pulchella	Pretty Wanderie	0.5m x 0.3m	5/sqm	6/sqm
Eriachne tenuiculis		0.6m (h)	4/sqm	5/sqm
Triodia epactia		1m x 0.5m	4/sqm	5/sqm
Triodia pungens	Soft Spinifex	0.3-2m (h)	3/sqm	4/sqm

Grouncover Species			Planting Density	
Scientific Name	Common Name	Mature Size (height x spread)	130mm Pot	Tube Stock
Acacia gregorii	Gregory's Wattle	0.5m x 2m	3/sqm	4/sqm
Enchylaena tomentosa	Barrier Salt Bush	0.1-0.6 x 2m	3/sqm	4/sqm
Gomphrena canescens	Bachelor's Buttons	0.1-0.9m x 0.8m	4/sqm	5/sqm
Ipomoea muelleri	Native Morning Glory	0.2m x 2m	3/sqm	4/sqm
Maireana georgei	Saliny Bluebush	0.5m x 1.3m	3/sqm	4/sqm
Pimelea ammodharis		0.2-1.5m x 1.5m	3/sqm	4/sqm
Ptilotus calostachyus	Weeping Mulla Mulla	0.2-2m x 0.5m	5/sqm	6/sqm
Ptilotus rotundifolius	Royal Mulla Mulla	0.5m x 1m	3/sqm	4/sqm
Scaevola parvifolia	Camel Weed	0.3m x 0.5m	5/sqm	6/sqm
Swainsona formosa	Sturt's Desert Pea	0.3m x 1m	3/sqm	4/sqm
Tribulus hirsutus		0.15 (h)	6/sqm	8/sqm

Tussock Species			Planting Density	
Scientific Name	Common Name	Mature Size (height x spread)	130mm Pot	Tube Stock
Chrysopogon fallax	Golden Beard Grass	0.3-1.5m(h)	4/sqm	6/sqm
Cymbopogon ambiguus	Native Lemon Grass	0.5m x0.5m	4/sqm	6/sqm
Triodia epactia		1m x 0.5m	4/sqm	5/sqm
Triodia pungens	Soft Spinifex	0.3-2m (h)	3/sqm	4/sqm



SITE and LANDSCAPE PLAN  
SCALE 1 : 200 on A1 LANDSCAPE



NEIL SALVIA  
BUILDING DESIGNS

Architectural Design & Drafting  
Client Side Project Management

Suite 11, 31 Cedar Street  
Stirling W.A. 6021  
P: 08 9344 6347 F: 08 939 370 355  
E: neil@nsbd.com.au W: www.nsbd.com.au

PROPOSED OFFICE/WAREHOUSE  
ON Lot 321 #12 OXIDE LOOP  
GAP RIDGE KARRATHA

FOR CLIENT : DAYSAFE TRAINING

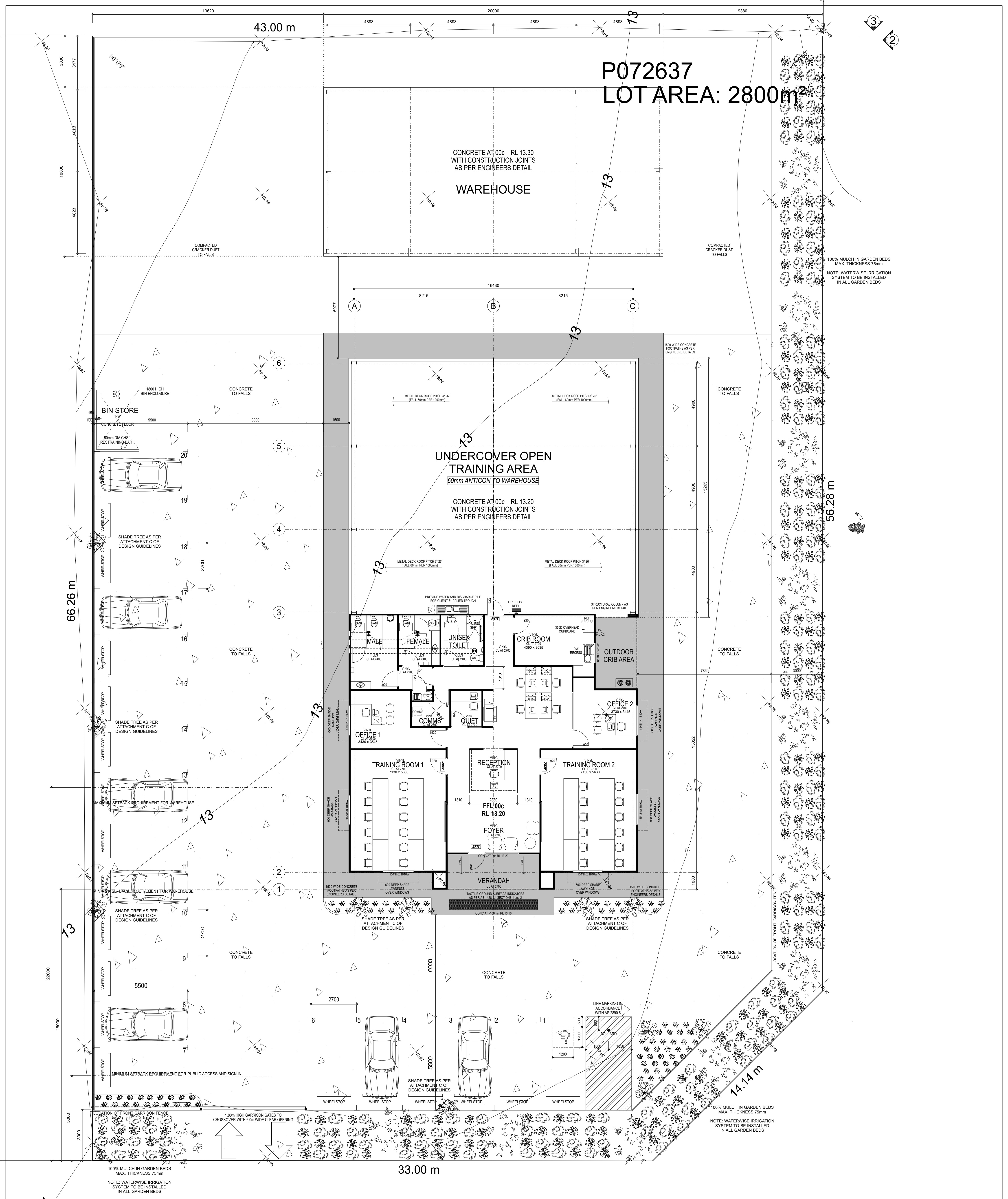
No	DATE	AMENDMENT	DWG
A	04/12/2023	Preliminary Design Development	NS
B	12/02/2024	Preliminary Design Development - Remove Second Crossover	NS

SCALE: 1:100 SHEET 1 OF 3

PRINTED DATE: 7/05/2024 @15:44

1. These plans are the sole property of Neil Salvia Building Designs and may not be reproduced or modified in whole or in part without written permission.  
2. Contractors shall check all dimensions and conditions on site prior to commencing fabrication or construction. Any discrepancies to be brought to the Supervisors attention.  
3. Do not scale from Drawings.  
4. Owner to note that all sizes shown are without plaster (where applicable) and should be allowed for.





# SITE and FLOOR PLAN

SCALE: 1 : 100 on A1 LANDSCAPE

AREAS	
OFFICE	240.14m²
VERANDAH	23.14m²
TRAINING AREA	260.88m²
WAREHOUSE	200.00m²
<b>NEW TOTAL</b>	<b>724.16m²</b>
GF PERIMETER	00.00m²

SITE COVER / OPEN SPACE	
ZONING	2800m²
ALLOWABLE SITE COVER	50% - 1400.00m²
ACTUAL SITE COVER	25.8% - 724.16m²
ACTUAL OPEN SPACE	90.0% - 000.00m²

PARKING CALCULATIONS		
City of Karratha LPS 8 - Appendix 3		
OFFICE 1 PER 30m <sup>2</sup>	238m <sup>2</sup>	8 Bays
OPEN TRAINING AREA 1 PER 50m <sup>2</sup>	261m <sup>2</sup>	6 Bays
WAREHOUSE 1 PER 50m <sup>2</sup>	200m <sup>2</sup>	4 Bays

**NEIL SALVIA BUILDING DESIGNS**  
Architectural Design & Drafting  
Client Side Project Management  
Suite 11, 37 Cordac Street  
Stirling WA 6021  
P: 08 9344 6747 M: 0800 570 335  
E: neil@nsbd.com.au W: www.nsbd.com.au  
Member 485 Building Designers Association WA (Inc)  
Accredited Member 1500 Building Designers Association WA (Inc)  
Member 384916 Housing Industry Association (HIA)

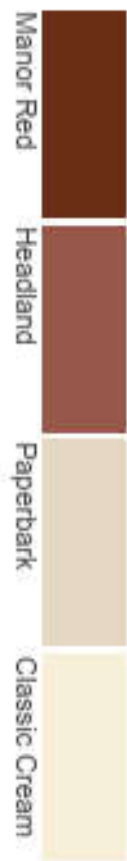
PROPOSED OFFICE/WAREHOUSE  
ON Lot 321 #12 OXIDE LOOP  
GAP RIDGE KARRATHA

FOR CLIENT : DAYSAFE TRAINING

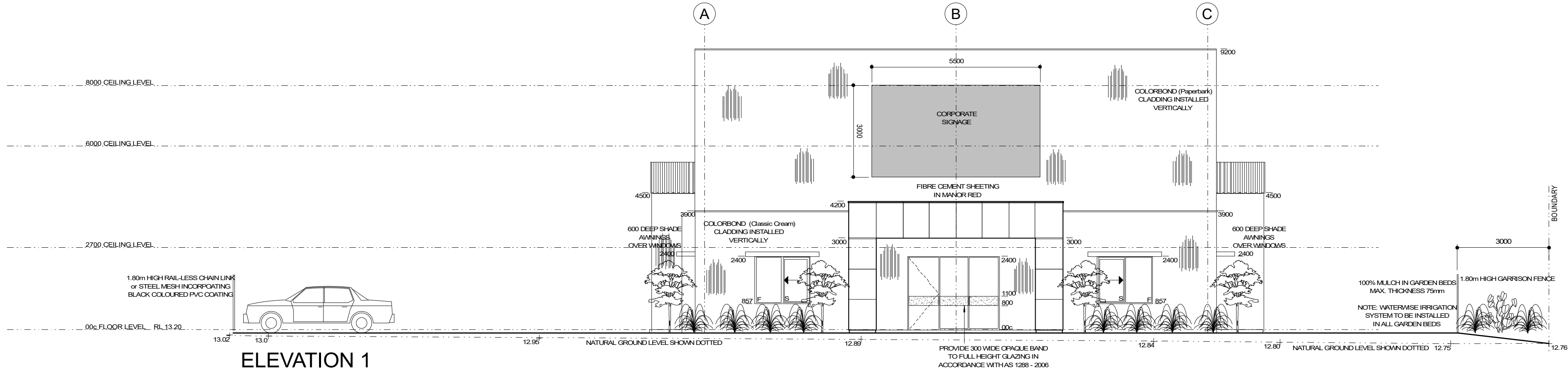
No	DATE	AMENDMENT	DWG
A	04/12/2023	Preliminary Design Development	NS
B	12/02/2024	Preliminary Design Development - Remove Second Crossover	NS

SCALE: 1:100 SHEET 2 OF 3  
PRINTED DATE: 7/05/2024 @13:52  
1. These plans are the sole property of Neil Salvia Building Designs and may not be reproduced or modified in whole or in part without written permission.  
2. Contractors shall check all dimensions and conditions on site prior to commencing fabrication or construction. Any discrepancies to be brought to the Supervisors attention.  
3. Do not scale from Drawings.  
4. Owner to note that all notes shown are without plaster (where applicable) and should be allowed for.

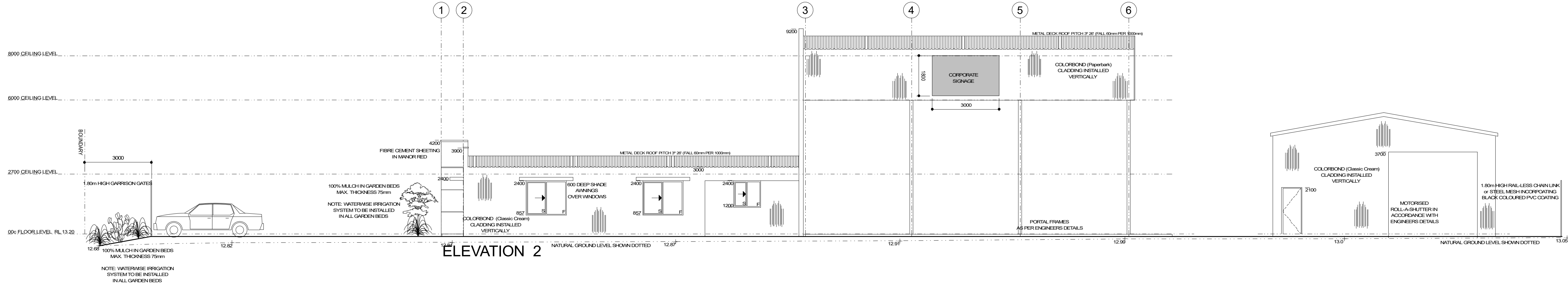




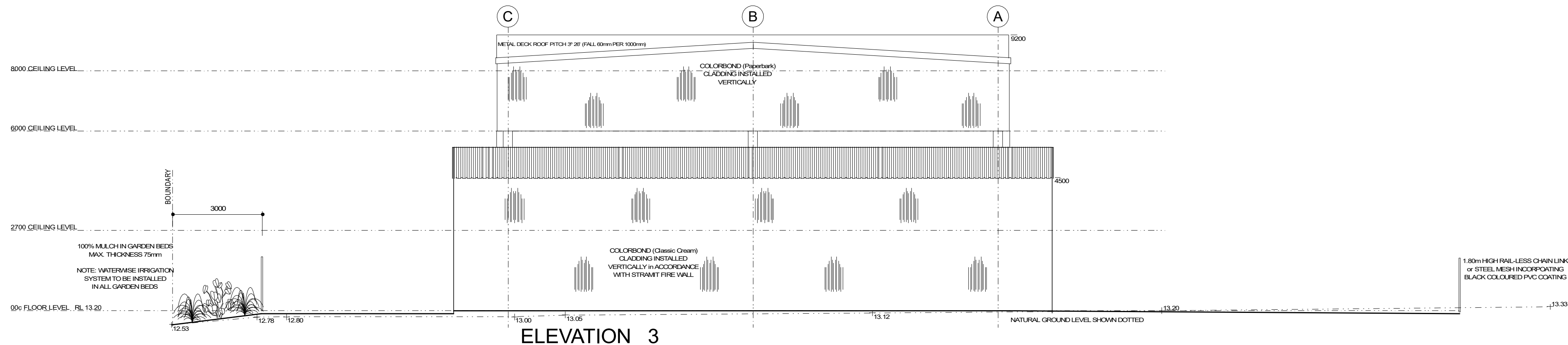
APPENDIX A - COLOUR PALETTE



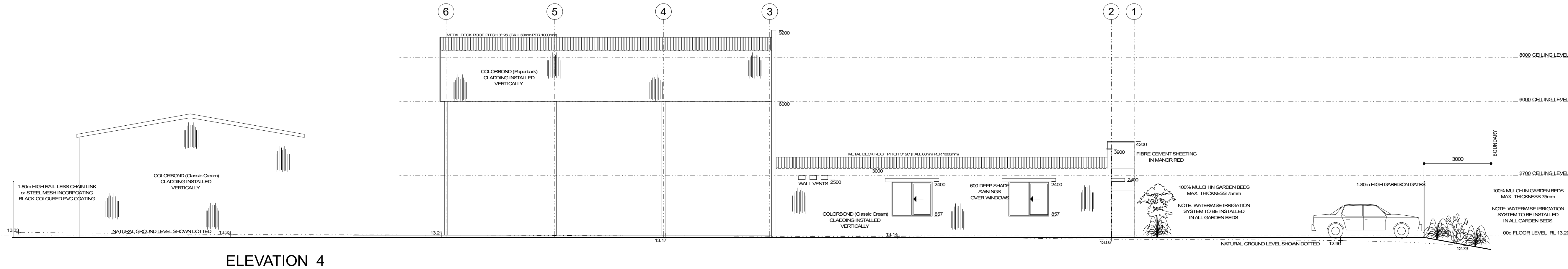
ELEVATION 1



ELEVATION 2



ELEVATION 3



ELEVATION 4



**NPIT SAIYIA**  
Architectural Design & Drafting  
Client Side Project Management  
B-108/514/47, Subang Jaya, Selangor, Malaysia  
Tel: 03-8944 6700, Fax: 03-8944 6701  
Email: info@npit-saiyia.com, www.npit-saiyia.com

**PROPOSED OFFICEWAREHOUSE**  
ON Lot 321 #12 OXIDE LOOP  
GAP RIDGE KARARATHA

FOR CLIENT : DAYSAFE TRAINING

No	DATE	AMENDMENT	DWG
1	15/07/2024	Prepared: Design Development	NS
2	15/07/2024	Prepared: Design Development	NS

SCALE: 1:100 SHEET OF 3  
PRINTED DATE: 15/07/2024 @ 15:17  
DRAWING NOT TO BE REPRODUCED OR TRANSMITTED IN ANY FORM OR BY ANY MEANS, ELECTRONIC OR MECHANICAL, WITHOUT PERMISSION IN WRITING FROM NPIT SAIYIA. THE CLIENT IS RESPONSIBLE FOR OBTAINING ALL NECESSARY APPROVALS AND PERMITS FROM THE RELEVANT AUTHORITIES. THE DESIGNER ACCEPTS NO LIABILITY FOR ANY CONSEQUENCES ARISING FROM THE USE OF THIS DRAWING FOR ANY PURPOSE OTHER THAN THAT INTENDED BY THE DESIGNER.